

MAKING OUR MONEY GO FURTHER

**Rotherham
Federation**



Strengthening Communities

Charity No: 1158600

Company No: 5913521

The Monthly Newsletter for the Making Our Money Go Further project

WHAT HAVE WE BEEN UP TO?

CONTINUED TO PROMOTE & GROW OUR 5 FACEBOOK PAGES – EASTWOOD, MALTBY, MASBROUGH, RAWMARSH & SWINTON, NOW WITH OVER 445 FOLLOWERS

PROMOTED THE PROJECT IN ROTHERHAM LIFE APRIL PUBLICATION

AS PART OF GLOBAL RECYCLING DAY WE ASKED PEOPLE TO DONATE THEIR STRONG CARRIER BAGS TO THEIR LOCAL FOOD BANKS

MET WITH MALTBY FOOD BANK TO DISCUSS A NEW GROUP RUNNING FROM THEIR NEW LOCATION

COLLABORATED WITH ROTHERHAM CITIZENS ADVICE TO SHARE INFORMATION & GUIDANCE AS PART OF DEBT AWARENESS WEEK

APPEARED IN THE REMA "REFUGEES AND ASYLUM SEEKERS SUPPORT IN ROTHERHAM" VIDEO

MAKING OUR MONEY GO FURTHER

Worried about affording the things you need?

Finding it hard to pay all your bills?

Would like some help but don't know where to go?

THEN WE CAN HELP!

"Making Our Money Go Further" is a free service for people in Rotherham who need support, advice, and guidance regarding their personal finances.



Rotherham Federation and Rotherham Citizens Advice are working in partnership to deliver this community-based project.

All activities take place in community venues in 10 areas across Rotherham making it easier for you to get the help you need locally.

WHAT WE OFFER

- Group meetings with people in your area who are experiencing similar problems.
- The chance to come together and share ideas and solutions that can really make a difference.
- Information and advice that helps you with the things that matter to you most.
- Access to one to one confidential and impartial advice on debt and benefits.
- Opportunities that will help reduce your outgoings and increase your income.
- Additional support that will help you to progress in the future.

FIND OUT MORE

If you want to find out more about this project, get involved and discover how to manage your money better, then contact Claire Stinson or Karen Jay on:

☎ Claire - 07398 013796
Karen - 07398 013824

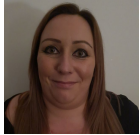
✉ claire.stinson@rotherfed.org
karen.jay@rotherfed.org

📘 Find us on Facebook
[/rother.fed](https://www.facebook.com/rother.fed)



UPDATE FROM THE TEAM

Claire



I've been working with Maltby foodbank putting together a bid for funding to develop a lovely community garden and help transform the hall into a community hub for Maltby.

Our lunchtime money quiz was a great success. It gave everyone an opportunity to have a giggle and meet new people during their lunch break.

We've been talking to partners to start planning for when we can be back in the community.

I delivered water bottles to the foodbanks who wanted to be involved with Global Recycling Day. There may be a few bottles left if you still want to donate carrier bags.

Karen



March has been another busy month talking to organisations and individuals about the project and exploring ideas of how this could work in their communities.

While we continue to work remotely we are also forming our plans for coming out of the restrictions and being able to have face to face meetings, which we are very excited about!

We recognise that as much as people are looking forward to this again, some may feel anxious & nervous too, so providing safe and comfortable environments is going to be a top priority.

"I have been shielding for 12 months & really enjoyed joining the quiz today, it was fun"

WHAT'S COMING UP THIS MONTH?

Until restrictions allow our events and activities will be online. Please check our Facebook pages for details:

April - National Pet Month, Stress Awareness Month.

5-11 April Community Garden Week

21 April MOMGF Lunchtime Fun Quiz

26-30 April Allergy Awareness Week

26 - 30 April National Gardening Week

30 April Cyber & Fraud Awareness Presentation (please register to attend this free event)

If you'd like to get involved in community led groups to help talk about and tackle money related issues we'd love to hear from you.

Perhaps you have a money saving idea that you want to share with others, or already have a group set up with your friends that you would like to roll out to the wider community? However small or big the idea we are here to help you if you need us.

To get involved please complete our Expression of Interest form: <https://cutt.ly/Ujn3EPG>



SCAN ME

If you have any suggestions about items to include in future issues please let us know.

Thank you for reading this newsletter.

FIND OUT MORE

If you want to find out more about this project, get involved and discover how to manage your money better, then contact Claire Stinson or Karen Jay on:

☎ Claire - 07398 013796
Karen - 07398 013824

✉ claire.stinson@rotherfed.org
karen.jay@rotherfed.org

📘 Find us on Facebook
[/rother.fed](https://www.facebook.com/rother.fed)

